

K
RAIN®

KCONNECT ///

BLUETOOTH® TAP TIMER

CO3011



WWW.K-RAIN.COM.AU

**User
Manual**

2
YEAR
WARRANTY

iOS is a trademark of Apple Inc. Android is a trademark of Google LLC. The Android robot is reproduced or modified from work created and shared by Google and used according to terms described in the Creative Commons 3.0 Attribution License. The Bluetooth® word mark and logos are registered trademarks owned by Bluetooth SIG, Inc. and any use of such marks by Holman Industries is under license. Other trademarks and trade names are those of their respective owners. All other content is Copyright © Holman Industries 2022.

Contents

Overview	4
Components	4
Key Features	5
Installation	6
Batteries	6
Installing Holman Home	7
Bluetooth® Connection	8
Adding your K Connect Tap Timer to Holman Home	8
Operation	10
K Connect Home Screen	10
Manual Watering	11
Scheduled Watering	12
Maintenance	13
Batteries	13
Connection Issues	13
Warranty	15

Overview



Components

1. 20/25mm BSP reducing bush
2. 25mm tap adaptor
3. **TAP TIMER BUTTON**
4. Watering LED
5. 20mm BSP outlet
6. Battery compartment: requires 3× AAA alkaline batteries only

⚠ Do not mix old and new batteries

Overview

Key Features

- ✔ Set and check irrigation schedules from the **Holman Home** app
- ✔ Manually turn off the water timer using the **TAP TIMER BUTTON**
- ✔ Water with two schedule types: **NORMAL SCHEDULE** and **MISTING**
- ✔ Watering delay options: 24, 48 and 72 hours
- ✔ Low power indicator
- ✔ Built-in filter: Clean this regularly and replace when worn to prolong the life of your **K Connect** timer
- ✔ Working pressure: 50-1200 kPa
- ✔ Maximum flow: 25 L/min
- ✔ Water and dust protection rating: IP54
- ✔ Working temperature: 4°-50°C

⚠ In temperatures below 4°C, your *K Connect* should be removed from the tap and stored indoors to avoid freezing damage

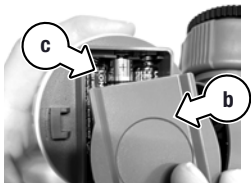
Installation

Batteries

1. Unlock the front face by twisting it counter-clockwise (a)



2. Pull out the sealed battery compartment lid (b)



3. Install 3× AAA alkaline batteries (c)

4. Replace the battery compartment lid
5. Replace the front face by ensuring the hooks lock into the body (d) and twist the face clockwise (e)



Installation

Installing Holman Home

1. Download **Holman Home** to your mobile device via the **App Store** or **Google Play**
4. Read our User Agreement and Privacy Policy and tap **AGREE** if you wish to proceed



SCAN FOR MORE INFO

2. Open **Holman Home** on your mobile device
 5. Follow the prompts to register a **Holman Home** account with your email address
- ⚠️ Ensure your country details are correct at this stage**
- i** You may be prompted to allow notifications—the app can still function if you choose to opt out
 - i** You may be prompted to allow access to your location. This allows the app to show weather information-it will still function if you choose to opt out
3. Tap **SIGN UP**

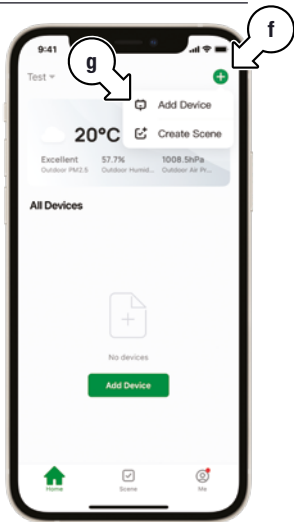
Installation

Bluetooth® Connection

- ✔ Ensure your smartphone is at most 20m away from your **K Connect** tap timer during the connection process or when setting watering plans
- ✔ Your **K Connect** tap timer will perform preset schedules from the app, even if your smartphone is out of **Bluetooth®** connection range

Adding your K Connect Tap Timer to Holman Home

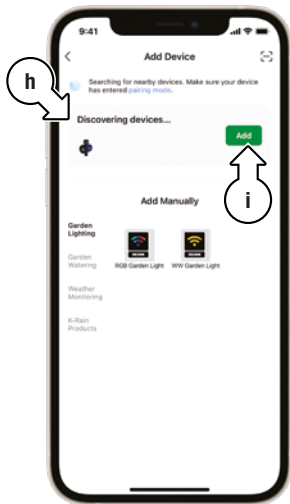
1. Ensure **Bluetooth®** is enabled on your device
2. Open **Holman Home** on your device
3. Open the **HOME** screen in **Holman Home** and tap **+** (f) and **ADD DEVICE** (g)



Installation

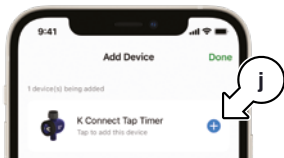
Adding your K Connect Tap Timer to Holman Home

- i** Your **K Connect** should appear under **DISCOVERING DEVICES** (h)

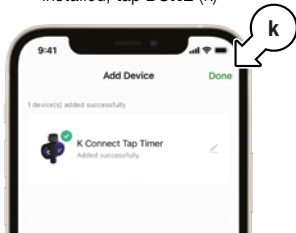


- i** If your **K Connect** doesn't appear under **DISCOVERING DEVICES**, check the batteries

4. Tap **ADD** (i)
5. On the following **ADD DEVICE** screen, tap **+** (j) for your **K Connect**




6. After your **K Connect** is installed, tap **DONE** (k)



Operation

K Connect Home Screen

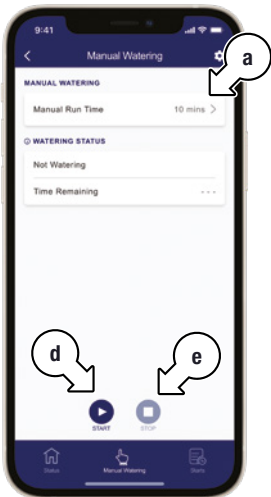
1. Back to **Holman Home**
2. Battery status
3. Watering status
4. **TIME REMAINING**
5. Watering **START/STOP**
6. Settings 
7. **STATUS**
8. **MANUAL**
9. **STARTS**
10. **WATERING DELAY** settings



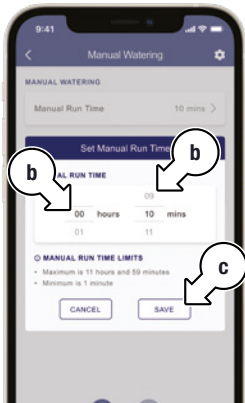
Operation

Manual Watering

1. Tap **MANUAL** to access manual watering controls
2. Tap **MANUAL RUN TIME** (a) to access timer controls



3. Use the scroll wheels (b) to set the **HOURS** and **MINS** for the watering, then tap **SAVE** (c)
4. Tap ► (d) to start watering for the saved duration and ■ (e) to stop watering early as desired



Operation

Scheduled Watering

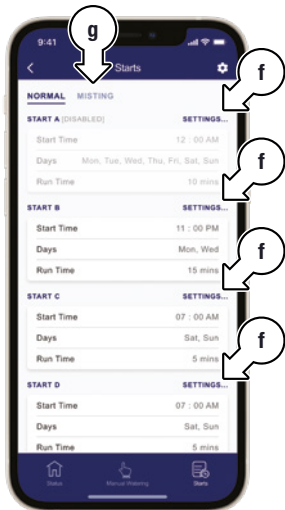
1. Tap **STARTS** to access scheduled watering controls
2. Tap **SETTINGS** next to the desired **START** (f) to access the scheduling

i This allows the following for each **START**:

- Enable/disable **START**
- Set the **START TIME**
- Select watering **DAYS**
- Set the **RUN TIME**

i Tap **MISTING** (g) to access timing ideal for misting. These settings also include:

- **ON TIME** for the misting cycle
- **DELAY TIME** for the misting cycle



Maintenance

Batteries

- i** Remove batteries from your **K Connect** tap timer during periods of non-use
- ⚠** **Battery leakage can cause corrosion and damage to your K Connect tap timer**

Connection Issues

- i** If your **K Connect** tap timer shows as disconnected after replacing the batteries, please wait a few minutes for **Holman Home** to update your device status
- i** For additional support with connection issues, please contact our **Customer Service** team



For support email
info@k-rain.com.au or
contact the friendly
Customer Service
team at Holman
Industries on
08 9416 9999

Supplied and Serviced
by Holman Industries

11 Walters Drive, Osborne Park WA 6017



SCAN FOR MORE INFO

Warranty

2 Year Replacement Guarantee

Holman Industries offers a 2 year replacement guarantee with this product.

In Australia our goods come with guarantees that cannot be excluded under the Australian Consumer Law. You are entitled to a replacement or refund for a major failure and compensation for any other reasonably foreseeable loss or damage. You are also entitled to have the goods repaired or replaced if the goods fail to be of acceptable quality and the failure does not amount to a major failure.

As well as your statutory rights referred to above and any other rights and remedies you have under any other laws relating to your Holman product, we also provide you with a Holman guarantee.

Holman Industries guarantees this product against defects caused by faulty workmanship and materials for 2 years domestic use from the date of purchase. During this guarantee period Holman Industries will replace any defective product. Packaging and instructions may not be replaced unless faulty.

In the event of a product being replaced during the guarantee period, the guarantee on the replacement product will expire 2 years from the purchase date of the original product, not 2 years from the date of replacement.

To the extent permitted by law, this Holman Replacement Guarantee excludes liability for consequential loss or any other loss or damage caused to property of persons arising from any cause whatsoever. It also excludes defects caused by the product not being used in accordance with instructions, accidental damage, misuse, or being tampered with by unauthorised persons, excludes normal wear and tear and does not cover the cost of claiming under the warranty or transporting the goods to and from the place of purchase.

Should you suspect your product may be defective and need some clarification or advice please contact us directly:

1300 716 188
support@holmanindustries.com.au
11 Walters Drive, Osborne Park 6017 WA

If you are certain your product is defective and is covered by the terms of this warranty, you will need to present your defective product and your purchase receipt as proof of purchase to the place you purchased it from, where the retailer will replace the product for you on our behalf.



We really appreciate having you as a customer and would like to say thank you for choosing us.

We recommend registering your new product on our website. This will ensure we have a copy of your purchase and activate an extended warranty. Keep up to date to with relevant product information and special offers available through our newsletter.



Scan here, or visit
k-rain.com.au/register
for more info